

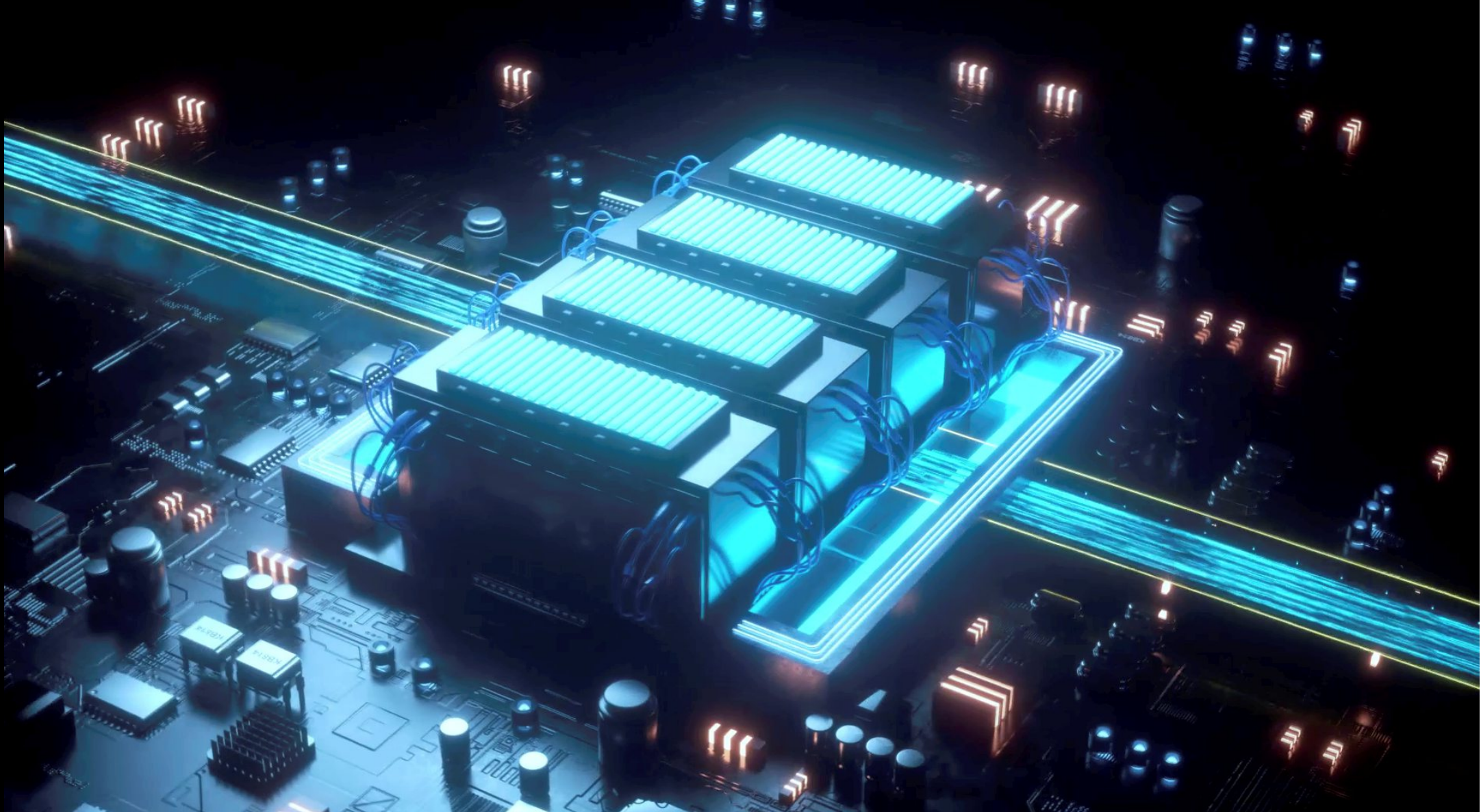
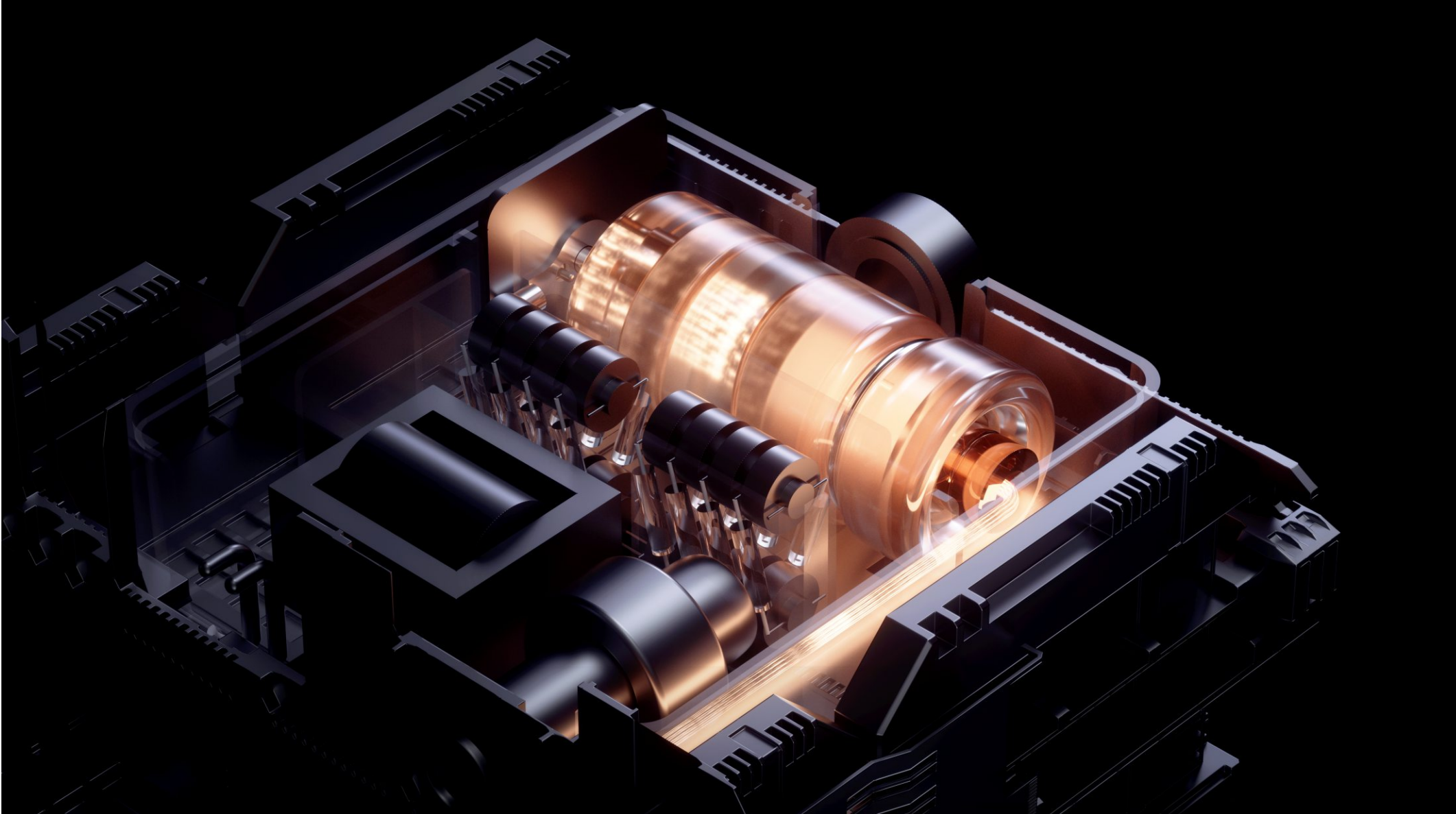
Gullin Woodpecker Medical Instrument Co., Ltd.
Information Industrial Park, Gullin National High-Tech
Zone, Gullin, Guangxi, 541004 P. R. China
Sales Dept.: +86-773-5873196/2350399
After-sales Service Dept.: 0773-5827898
E-mail: woodpecker4@glwoodpecker.com
Website: http://www.glwoodpecker.com

DTE

DTE

Ai Ray

Dental X-Ray Device



PURELY IMPORTED JAPAN CANON
HIGH-FREQUENCY X-RAY TUBE

Refined tube manufacturing process
Ensure X-ray output stability and quality
Guarantee safe photography

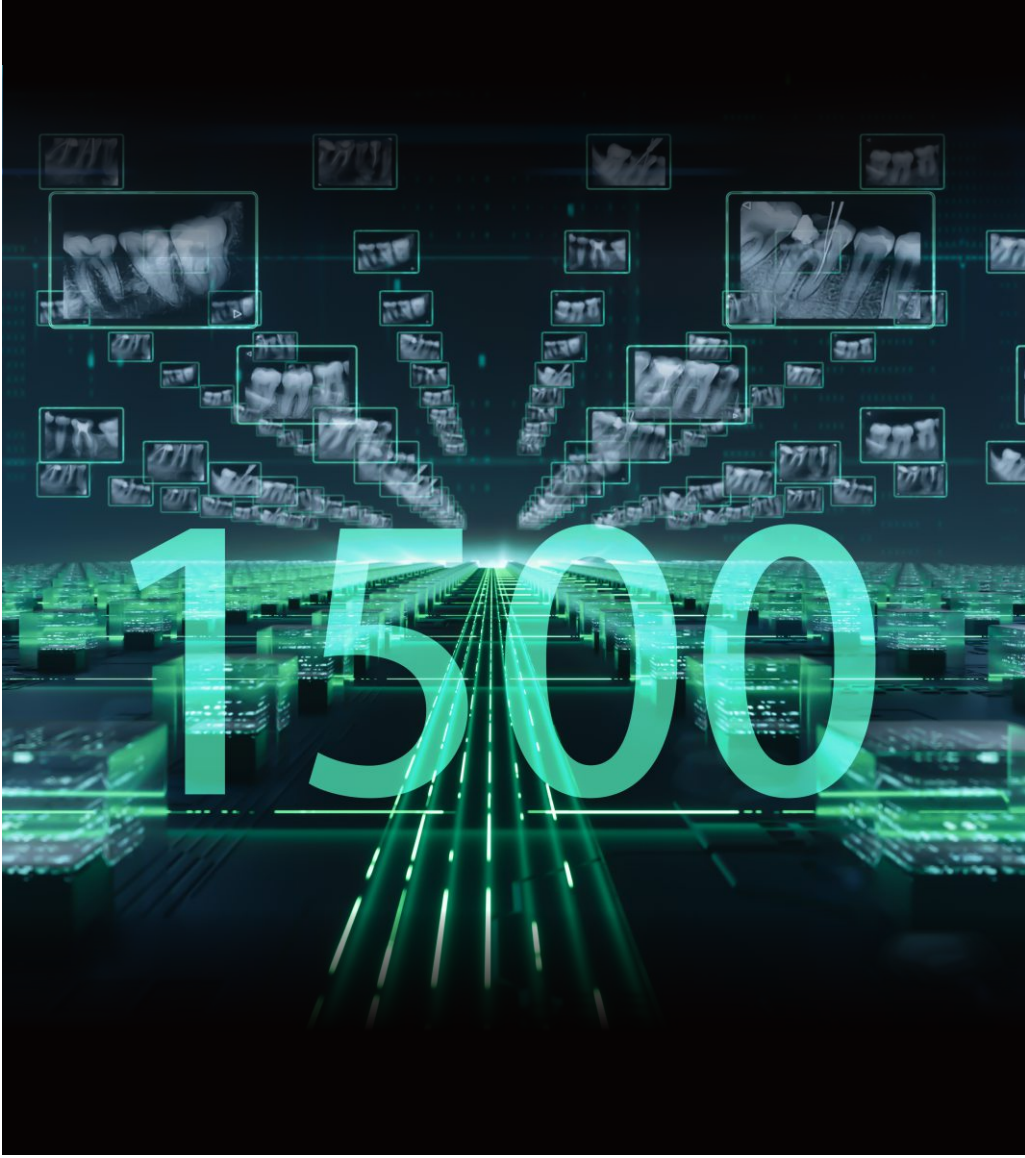
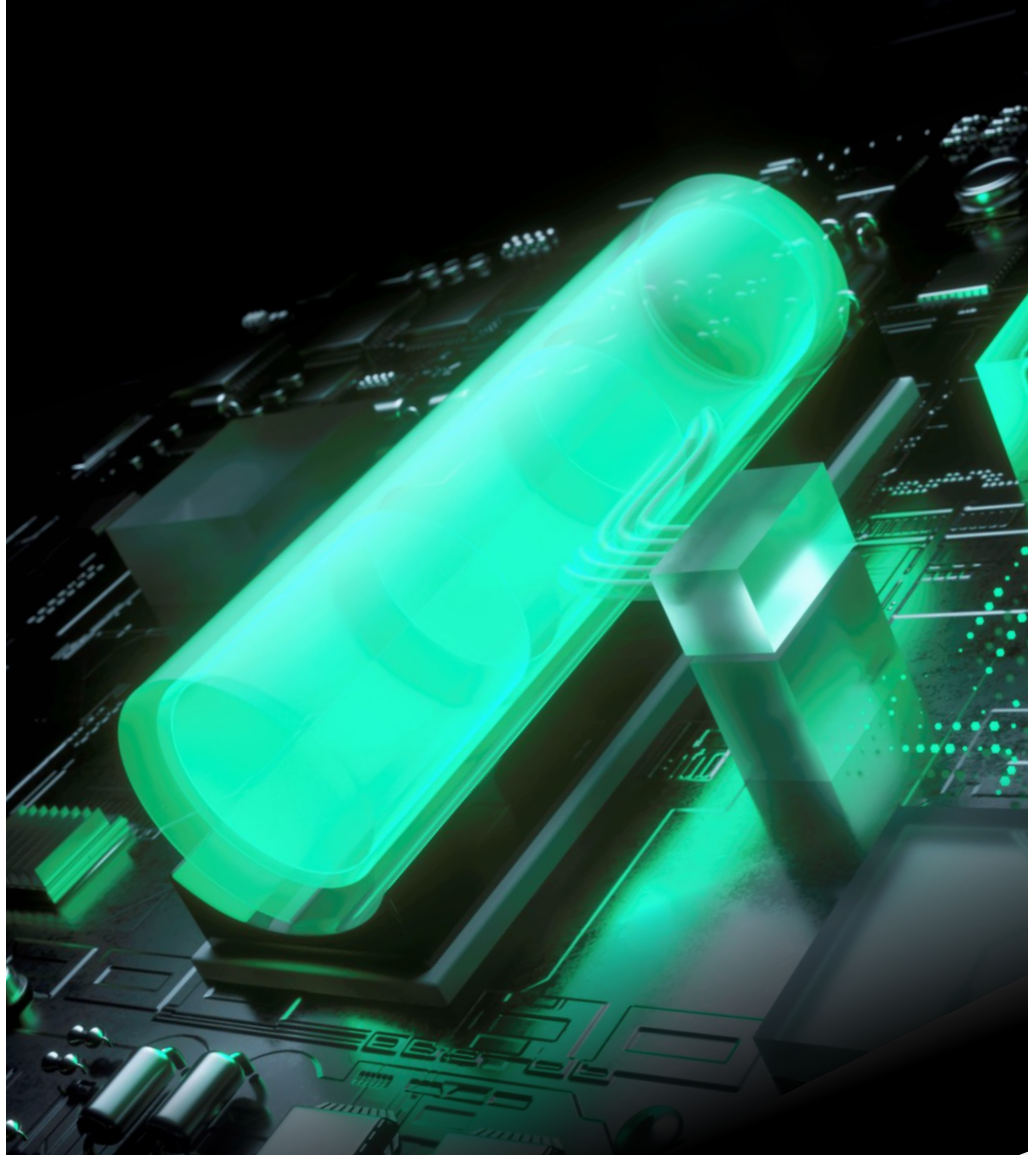
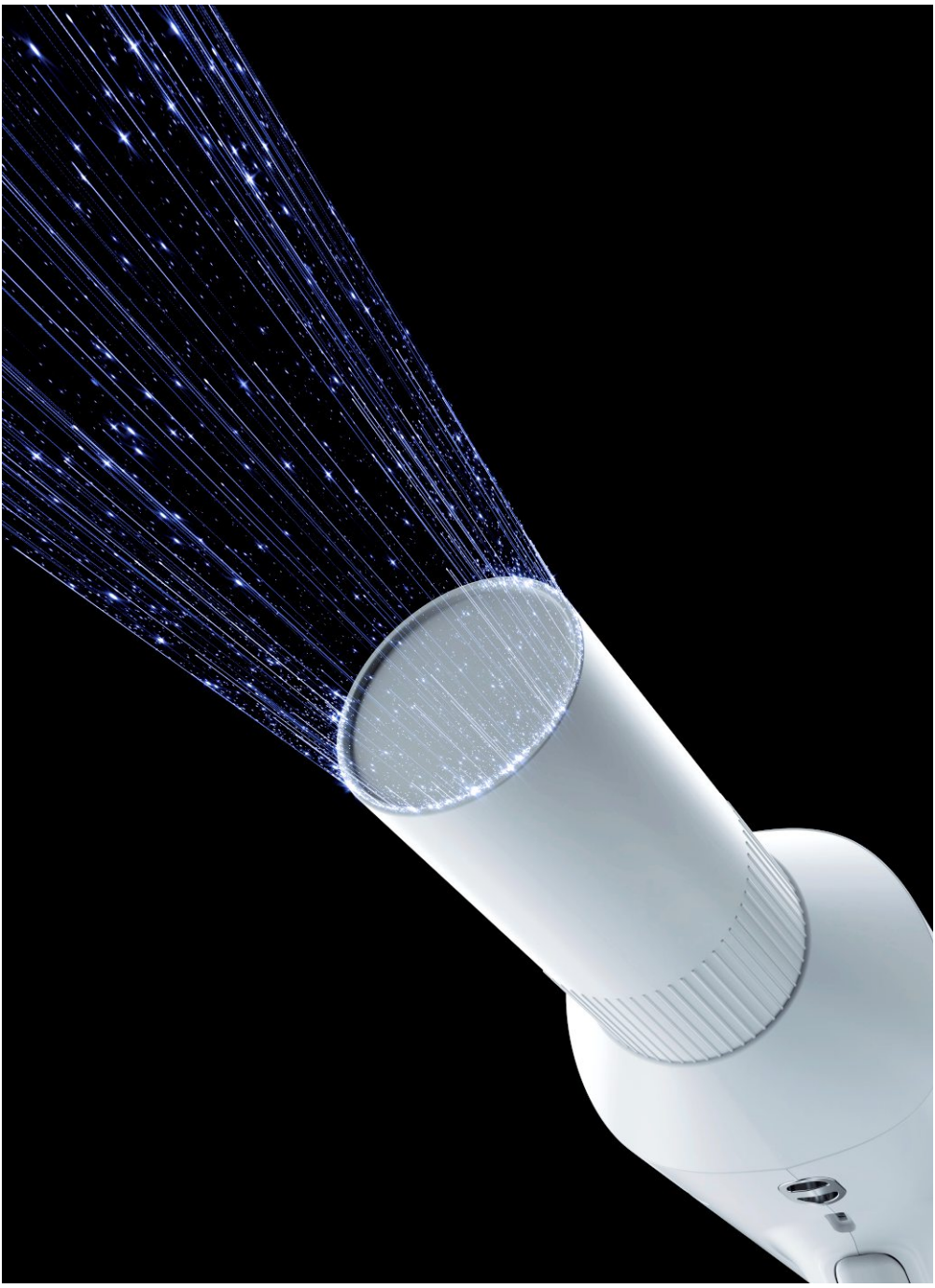
SUPER HIGH PERFORMANCE
HIGH EFFICIENCY

Emission power up to 210W
Shorter exposure time with high power
Achieve stable, accurate and quick photography of
different tooth positions

DETAILED DENTAL FILMS
MORE RELIABLE

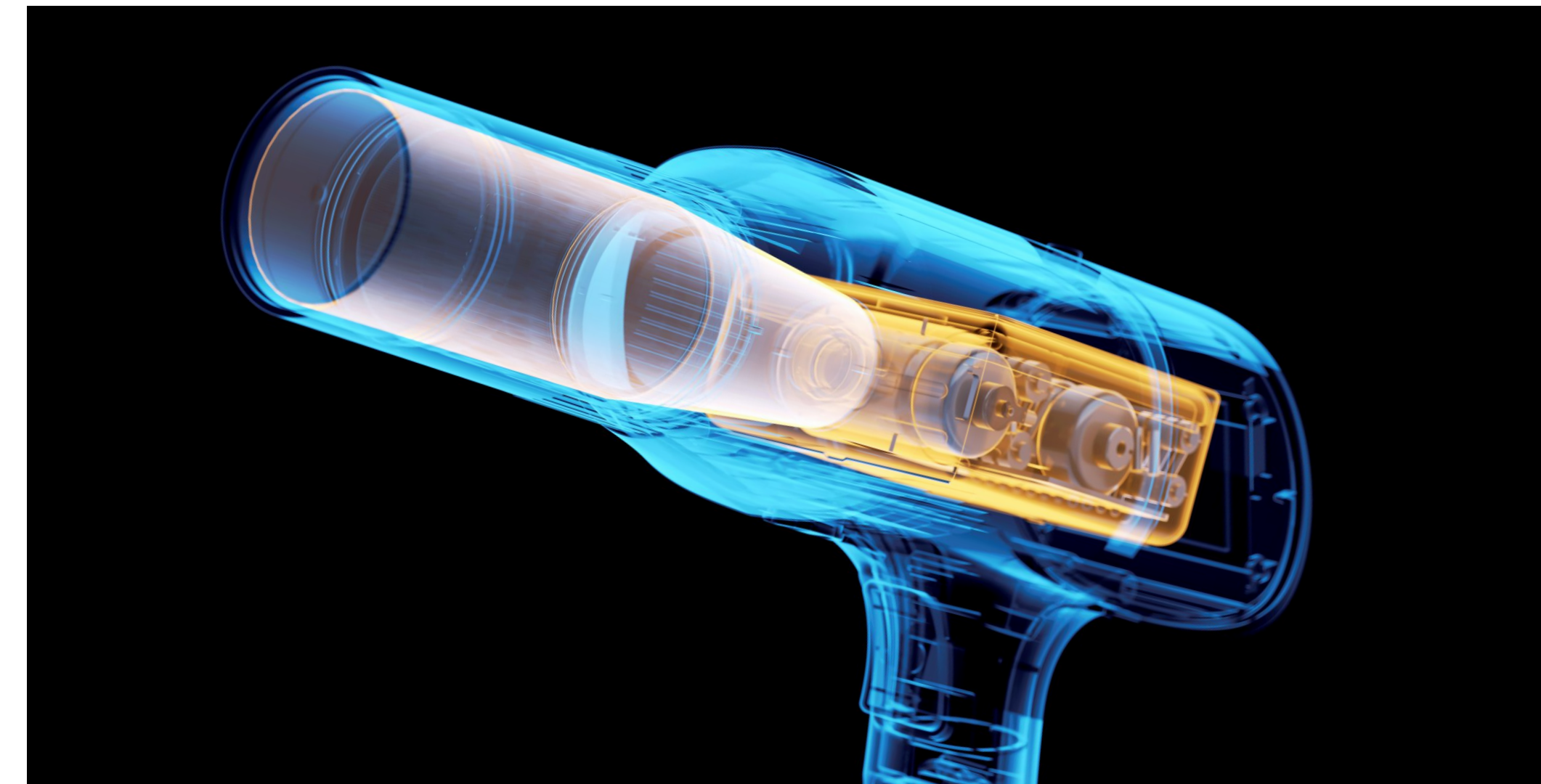
0.4mm focus X-ray tube

Provide high-quality and clearer image
for various diagnostic needs



HIGH-CAPACITY BATTERY
LONGER ENDURANCE

15000mAh high-capacity power lithium
battery delivers a longer endurance.
More than 1,500 dental films can be taken under a full charge.



MAXIMUM EFFICIENCY
AND SAFETY

Constant DC high-frequency high voltage and current output
Ensure that X-ray output is not affected by battery voltage fluctuations

Unique internal design and lead shield
Efficiently minimize the X-ray leakage
Maximize the protection of operators from ionizing radiation



Over 110

Dental films can be taken after 5mins of charging.

Enable clear and concise display
Abandon the traditional physical button,
beautifying the machine's appearance

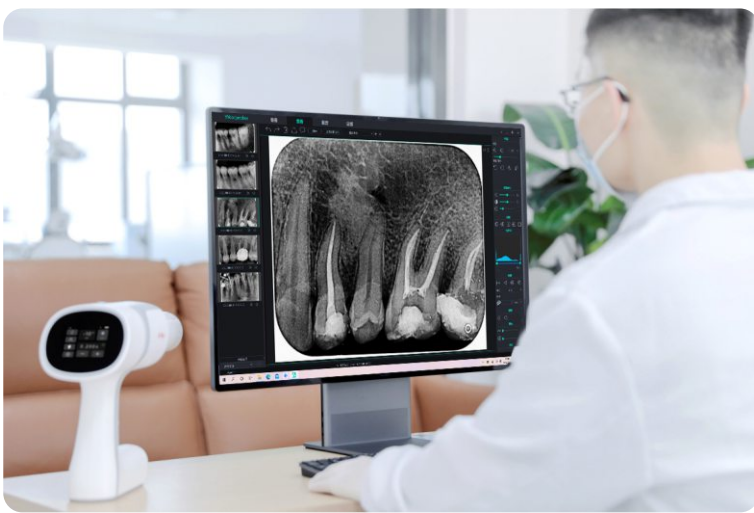
ANGLE CORRECTION

Corresponding photographing angle
reference values provided for different tooth positions
During the photography,
keep the patient in the correct sitting position
and adjust the dental x-ray device
to obtain the best photographing angle
and improve the efficiency.



VARIOUS PHOTOGRAPHING METHODS
EASY TO OPERATE

Built-in remote control receiving circuit
and holder interface, can be connected to the wired remote
controller and triangle holder.
A variety of photographing methods available,
ensuring safer photographing and easier operation.



COMFORTABLE
TO HOLD

Reasonably-designed exposure switch
avoids holding instability,
greatly easing the user's operation.

